



CASCADE
engineering

shaping the environment

3400 innovation court se
grand rapids, mi 49512-2085
p. 616.975.4800
f. 616.254.4174

cascadeng.com

We provide innovative solutions to the increasingly difficult challenges faced by our customers. We accomplish this through a marriage of technological advancements and strong personal and corporate relationships, both of which are built on a commitment to excellence. Most important, we offer this faster than expected, because speed to market is a crucial factor for all of our clients.

At Cascade Engineering, we are continually shaping ideas in plastics through materials development, engineering and manufacturing of plastics products, support materials and services for the solid waste industry. We look forward to the opportunity to create solutions that make sense for you, and for your bottom line.



CASCADE
engineering

shaping the environment



THE GREEN BUILDING COMMITMENT AT CASCADE ENGINEERING



The Cascade Engineering corporate headquarters has been designed and remodeled to meet the certification guidelines of the LEED EB (Leadership in Energy and Environmental Design for Existing Buildings) Green Building Rating System® developed by the US Green Building Council. The Council's mission is to foster the adoption of green building practices, technologies, policies and standards. The LEED rating is an evaluation of the environmental performance from a whole building perspective.

LEED certification criteria for existing buildings covers the following:

- Sustainable site management
- Water efficiency
- Energy and atmosphere
- Materials and resource management
- Indoor environmental quality
- Innovation and design process

Cascade Engineering is committed to effectively managing all of its resources — human and environmental. The promise to be responsible demands that one also be accountable. For this reason, we are in the process of developing our new corporate headquarters to meet LEED EB certification guidelines and also added a few of our own ideas not required for certification. It is our belief that green building practices are not only healthy, but also necessary to our continued success.

PARKING AREA AND GROUNDS

- Indigenous wildflowers utilized to reduce mowing emissions and irrigation requirements
- Landscaping to optimize water usage and reduce stormwater runoff
- Pervious (brick) paving system in parking lot allowing water to penetrate
- Low environmental impact building exterior management practices
- Trees to provide shade and reduce heat islands
- Varieties of grasses appropriate for soil
- Reduced parking requirements
 - Promote carpooling and telecommuting to lessen commuting frequency, volume and parking needed
 - Bike racks and showering facilities for bikers
- Preferred parking and recharging station for hybrid vehicles
- Outdoor lighting limited to reduce light pollution

BUILDING ENTRYWAY AND COMMON SPACE

- Existing building reused and developed to meet green building criteria and reduce site disturbance
- 90% of construction waste diverted from landfill
- Reuse of several existing building materials
- Recycled café furnishings and commercial kitchen equipment
- Carpet tiles sectioned for replacement or repair, if necessary, and for recycling or second generation reuse
- White roof with high reflectance to reduce heat gain
- Lobby wallpaper produced from a single Japanese Sycamore tree
- Meeting rooms named after Michigan's natural bodies of water, i.e., Betsie River Room and Fox River Room

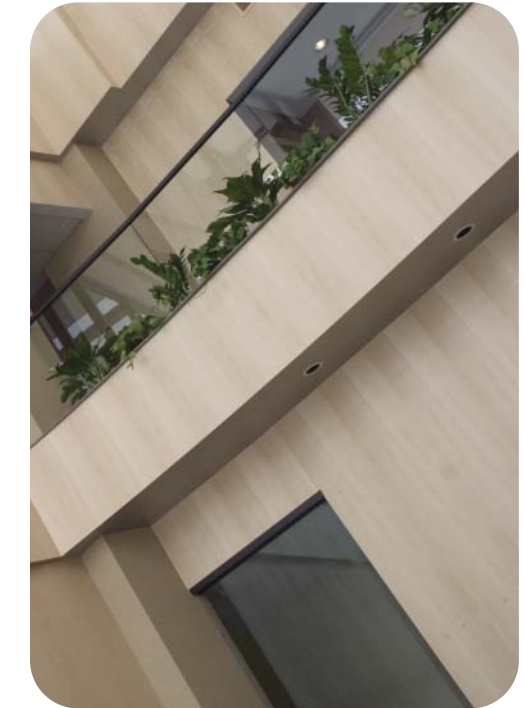
AMENITIES/POWER PLANT

- Reduction of water use
 - Low flow water fixtures
 - Sensor activated lavatory basins and sinks
 - Waterless urinals
- Energy use reduction
 - High efficiency heating, ventilating and air conditioning system (HVAC)
 - Temperature regulated at 70 degrees to lessen burden on utilities
 - High-efficiency lighting — automatically shuts off when not in use
- 75% of waste product eliminated, recycled or reused to reduce burden on landfills
- Low environmental impact Green Housekeeping practices
- Reduction of mercury in lighting to only trace amounts
- Utilization of Green Power or renewable energy technologies
- Designated outdoor smoking areas only

Cascade Engineering is currently in the process of setting up systems and collecting data to become LEED EB Certified.

OFFICES

- Recycled/reused furnishings
- Recycled chairs with high recyclable material content
- Natural light and views in occupied areas of the building



LEED CERTIFICATION CRITERIA MET